

LSI

WALLCOVERING

Since 1956

Compass East

Type I

Fabric Backed Vinyl Wallcovering

COMPASS

— EAST —

by 

A SPECIAL COLLECTION FROM AN AWARD-WINNING STUDIO

LSI Wallcovering, an established global leader in commercial vinyl wallcoverings, introduces **Compass East**: an exclusive collection of distinctive textures and uniquely designed prints. Manufactured in our state of the art facility in Suzhou, China, our wallcoverings meet the same high quality standards of our USA manufacturing.

Designed by the award-winning LSI Studio, **Compass East** features a broad range of grass effects, silks, and linens. The collection offers an appealing palette of neutrals and metallic finishes that will enhance any interior space.

Compass East is available in over 60 countries around the world through our world-wide distribution network.

Visit lsiwallcovering.com for technical information.



Compass East

Type I Fabric Backed Vinyl Wallcovering

LSI
WALLCOVERING
Since 1956



Compass East - Patterns



Palm Beach



Specifications

- Width – 52/54 in (132/137 cm)
- Backing – Osnaburg
- Installation – Reverse hang / Random
- Weight – 15 OZ/LY (340 gr/m²)
- Hanging Instructions – [download](#)
- Warranty – [download](#)
- Packing: 30 LY(37.4 m²) / Roll

Environmental Attributes

- Low VOC meets CA01350
- Meets LEED criteria for EQc2
- Meets NSF/ANSI 342 certification; check with distributor for actual level
- Meets GB18585-2001

Fire Resistance Attributes

- USA ASTM E84 Class A
- China GB8624 Class B1
- European EN13501 Class B1
- British BS 476 Part 6 & Part 7 Class 0



燃烧性能等级标识





CCE-301



CCE-302



CCE-303



CCE-304



CCE-305



CCE-306



CCE-307

Velocity



Specifications

- Width – 52/54 in (132/137 cm)
- Backing – Osnaburg
- Installation – Reverse hang / Random
- Weight – 15 OZ/LY (340 gr/m²)
- Hanging Instructions – [download](#)
- Warranty – [download](#)
- Paking: 30 LY(37.4 m²) / Roll

Environmental Attributes

- Low VOC meets CA01350
- Meets LEED criteria for EQc2
- Meets NSF/ANSI 342 certification; check with distributor for actual level
- Meets GB18585-2001

Fire Resistance Attributes

- USA ASTM E84 Class A
- China GB8624 Class B1
- European EN13501 Class B1
- British BS 476 Part 6 & Part 7 Class 0



燃烧性能等级标识





CCE-308



CCE-309



CCE-310



CCE-311

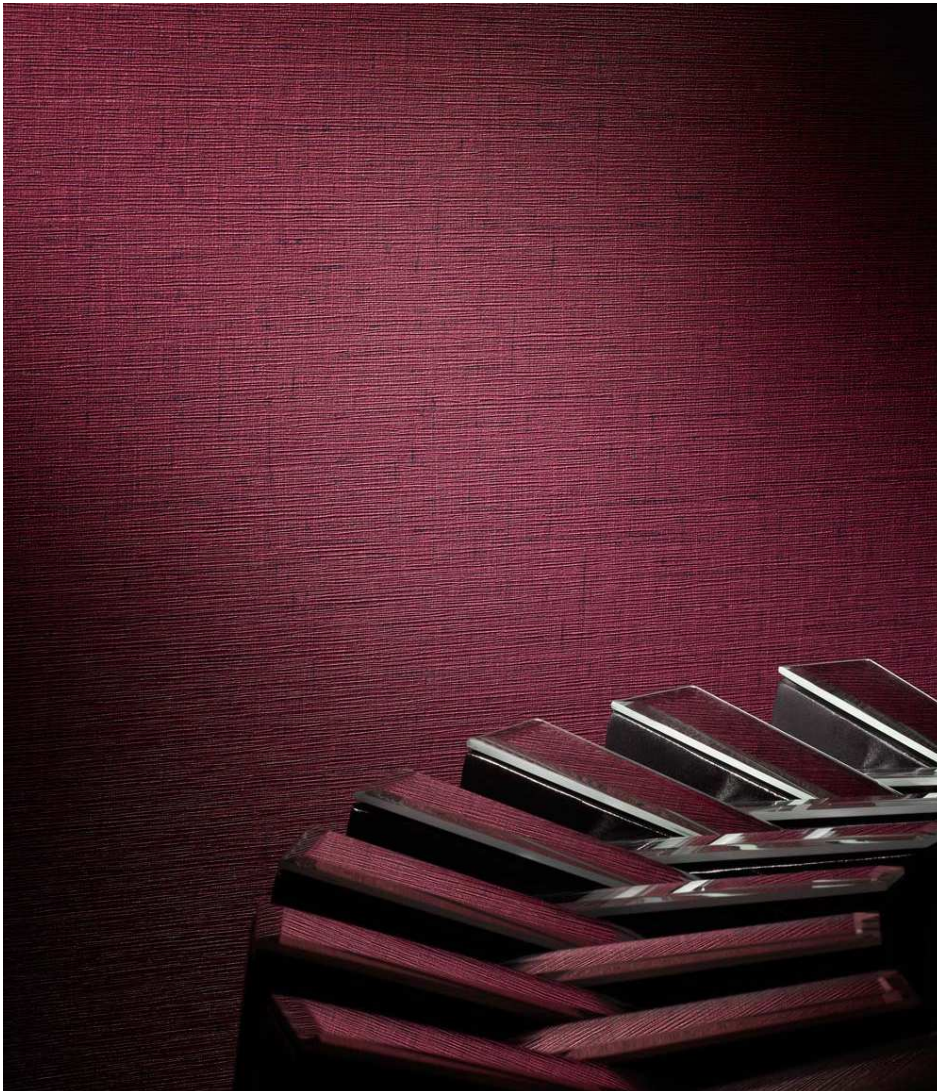


CCE-312



CCE-313

Elise



Specifications

- Width – 52/54 in (132/137 cm)
- Backing – Osnaburg
- Installation – Reverse hang / Random
- Weight – 15 OZ/LY (340 gr/m²)
- Hanging Instructions – [download](#)
- Warranty – [download](#)
- Packing: 30 LY(37.4 m²) / Roll

Environmental Attributes

- Low VOC meets CA01350
- Meets LEED criteria for EQc2
- Meets NSF/ANSI 342 certification; check with distributor for actual level
- Meets GB18585-2001

Fire Resistance Attributes

- USA ASTM E84 Class A
- China GB8624 Class B1
- European EN13501 Class B1
- British BS 476 Part 6 & Part 7 Class 0

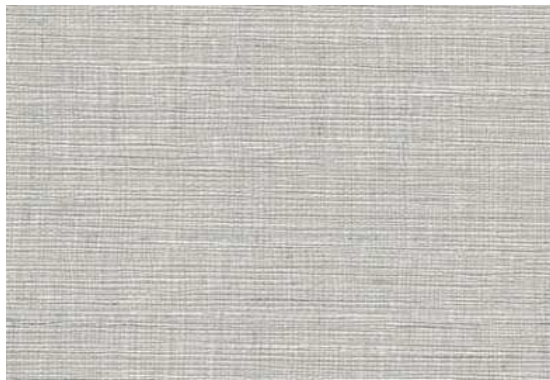


燃烧性能等级标识





CCE-314



CCE-315



CCE-316



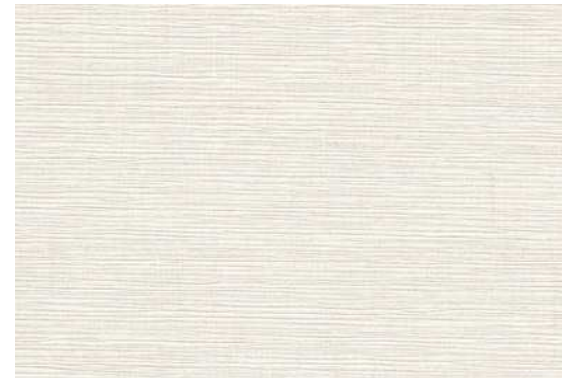
CCE-317



CCE-318



CCE-319



CCE-320

Shoji



Specifications

- Width – 52/54 in (132/137 cm)
- Backing – Osnaburg
- Installation – Reverse hang / Random
- Weight – 15 OZ/LY (340 gr/m²)
- Hanging Instructions – [download](#)
- Warranty – [download](#)
- Packing: 30 LY(37.4 m²) / Roll

Environmental Attributes

- Low VOC meets CA01350
- Meets LEED criteria for EQc2
- Meets NSF/ANSI 342 certification; check with distributor for actual level
- Meets GB18585-2001

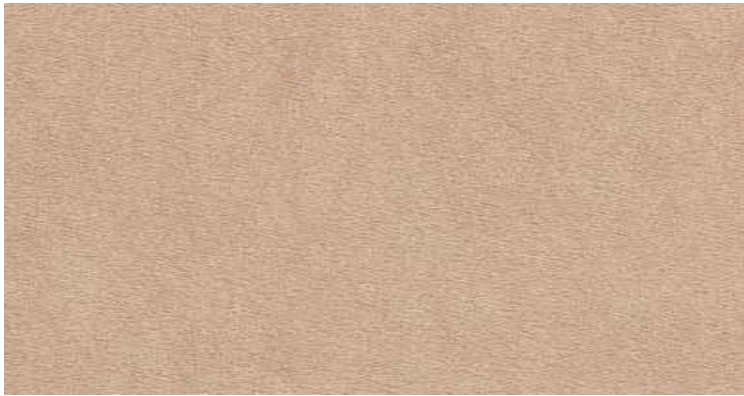
Fire Resistance Attributes

- USA ASTM E84 Class A
- China GB8624 Class B1
- European EN13501 Class B1
- British BS 476 Part 6 & Part 7 Class 0

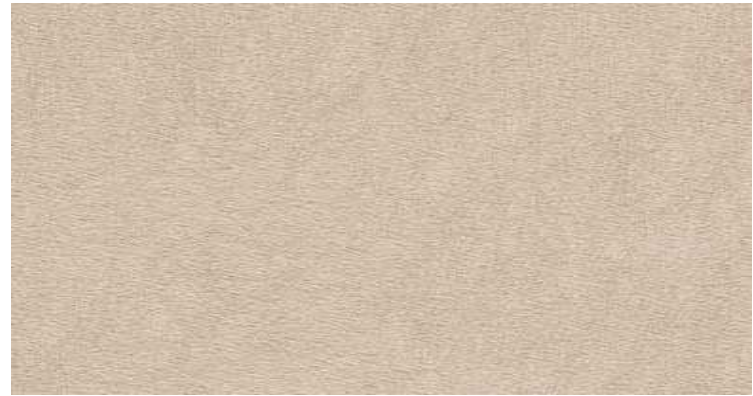


燃烧性能等级标识





CCE-321



CCE-322



CCE-323



CCE-324



CCE-325



CCE-326

Athens



Specifications

- Width – 52/54 in (132/137 cm)
- Backing – Osnaburg
- Installation – Reverse hang / Random
- Weight – 15 OZ/LY (340 gr/m²)
- Hanging Instructions – [download](#)
- Warranty – [download](#)
- Packing: 30 LY(37.4 m²) / Roll

Environmental Attributes

- Low VOC meets CA01350
- Meets LEED criteria for EQc2
- Meets NSF/ANSI 342 certification; check with distributor for actual level
- Meets GB18585-2001

Fire Resistance Attributes

- USA ASTM E84 Class A
- China GB8624 Class B1
- European EN13501 Class B1
- British BS 476 Part 6 & Part 7 Class 0



燃烧性能等级标识





CCE-327



CCE-328



CCE-329



CCE-330



CCE-331

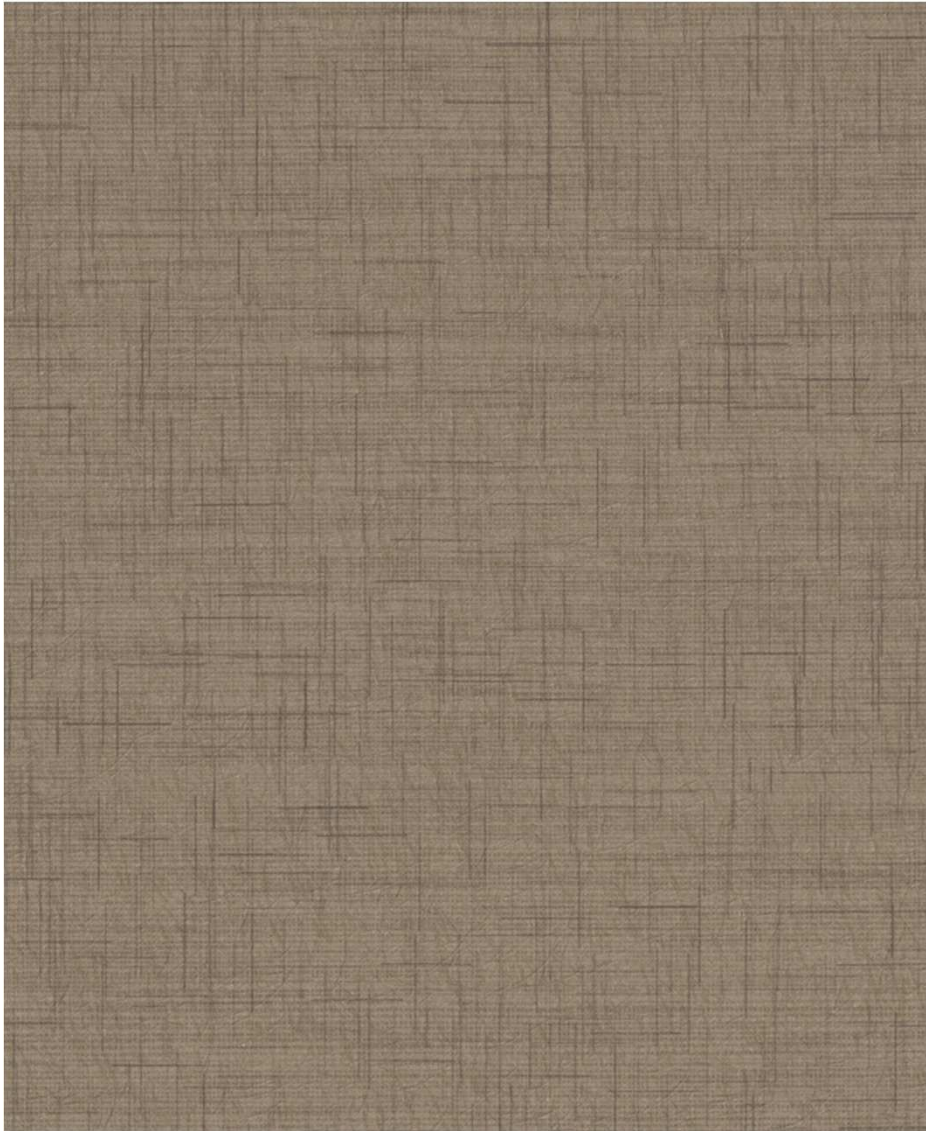


CCE-332



CCE-333

Matrix



Specifications

- Width – 52/54 in (132/137 cm)
- Backing – Osnaburg
- Installation – Reverse hang / Random
- Weight – 15 OZ/LY (340 gr/m²)
- Hanging Instructions – [download](#)
- Warranty – [download](#)
- Packing: 30 LY(37.4 m²) / Roll

Environmental Attributes

- Low VOC meets CA01350
- Meets LEED criteria for EQc2
- Meets NSF/ANSI 342 certification; check with distributor for actual level
- Meets GB18585-2001

Fire Resistance Attributes

- USA ASTM E84 Class A
- China GB8624 Class B1
- European EN13501 Class B1
- British BS 476 Part 6 & Part 7 Class 0



燃烧性能等级标识

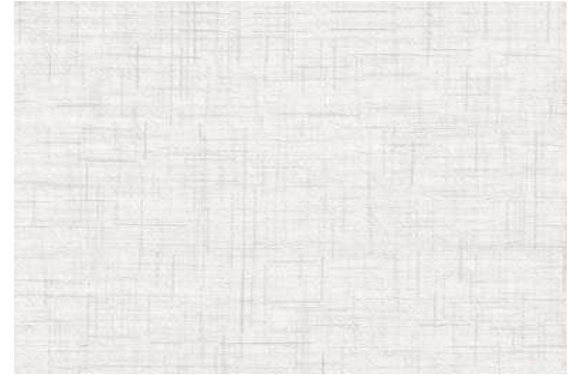




CCE-334



CCE-335



CCE-336



CCE-337



CCE-338



CCE-341



CCE-339



CCE-340

Valentino



Specifications

- Width – 52/54 in (132/137 cm)
- Backing – Osnaburg
- Installation – Reverse hang / Random
- Weight – 15 OZ/LY (340 gr/m²)
- Hanging Instructions – [download](#)
- Warranty – [download](#)
- Packing: 30 LY(37.4 m²) / Roll

Environmental Attributes

- Low VOC meets CA01350
- Meets LEED criteria for EQc2
- Meets NSF/ANSI 342 certification; check with distributor for actual level
- Meets GB18585-2001

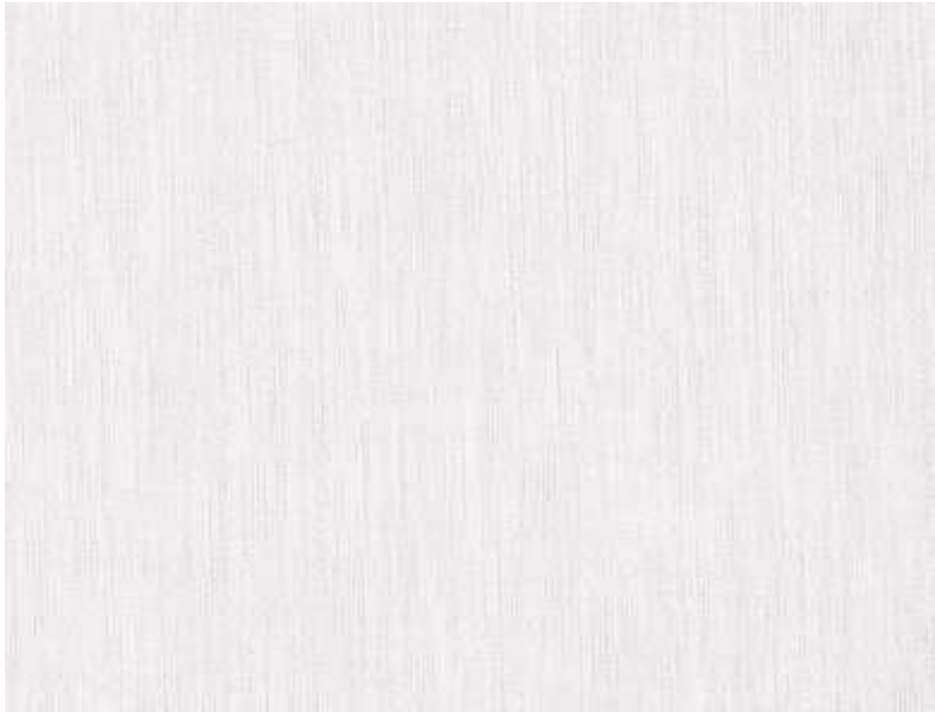
Fire Resistance Attributes

- USA ASTM E84 Class A
- China GB8624 Class B1
- European EN13501 Class B1
- British BS 476 Part 6 & Part 7 Class 0



燃烧性能等级标识





CCE-342



CCE-344



CCE-345



CCE-343



CCE-346

En soie



Specifications

- Width – 52/54 in (132/137 cm)
- Backing – Osnaburg
- Installation – Reverse hang / Random
- Weight – 15 OZ/LY (340 gr/m²)
- Hanging Instructions – [download](#)
- Warranty – [download](#)
- Packing: 30 LY(37.4 m²) / Roll

Environmental Attributes

- Low VOC meets CA01350
- Meets LEED criteria for EQc2
- Meets NSF/ANSI 342 certification; check with distributor for actual level
- Meets GB18585-2001

Fire Resistance Attributes

- USA ASTM E84 Class A
- China GB8624 Class B1
- European EN13501 Class B1
- British BS 476 Part 6 & Part 7 Class 0



燃烧性能等级标识





CCE-347



CCE-348



CCE-349



CCE-350



CCE-351



CCE-352



CCE-353



CCE-354

INDEX

Pattern Name	Pattern Numbers	Weight	Backing	Installation	Installation
Palm Beach	CCE-301 - 307	15 oz/ly (340 gr/m ²)	Scrim	Reverse Hang/Random Match	52" - 54" * 30 Yards
Velocity	CCE-308 - 313	15 oz/ly (340 gr/m ²)	Scrim	Reverse Hang/Random Match	52" - 54" * 30 Yards
Elise	CCE-314 - 320	15 oz/ly (340 gr/m ²)	Scrim	Reverse Hang/Random Match	52" - 54" * 30 Yards
Shoji	CCE-321 - 326	15 oz/ly (340 gr/m ²)	Scrim	Reverse Hang/Random Match	52" - 54" * 30 Yards
Athens	CCE-327 - 333	15 oz/ly (340 gr/m ²)	Scrim	Reverse Hang/Random Match	52" - 54" * 30 Yards
Matrix	CCE-334 - 341	15 oz/ly (340 gr/m ²)	Scrim	Reverse Hang/Random Match	52" - 54" * 30 Yards
Valentino	CCE-342 - 346	15 oz/ly (340 gr/m ²)	Scrim	Reverse Hang/Random Match	52" - 54" * 30 Yards
En Sole	CCE-347 - 354	15 oz/ly (340 gr/m ²)	Scrim	Reverse Hang/Random Match	52" - 54" * 30 Yards

SPECIFICATIONS

- 52-54" (132/137 cm) width.
- Meets/Exceeds CCC-W-408D & W101 Specifications
- High tear and tensile strength
- Highly cleanable & stain resistant
- Fire Certification - Class A - ASTM E84
- Fire Certification-GB8624-2012-B1(B-s2,d0, t0)
- Color fast water-based inks
- Low VOC CA01350 (Indoor Air Quality)
- No formaldehyde or heavy metals
- Meets/Exceeds GB18185-2001 Standard for harmful substances
- Meets BS476 Part 6/7-British Class 0 Standard
- Non-ortho phthalate plasticizers
- Visit versawallcovering.com for technical information.

WARRANTY

Compass products are guaranteed to be free of defects in workmanship and materials for five years.

COMPASS
— EAST —